



DECOHIGH MANUFACTURING

[www.decohigh.co.za](http://www.decohigh.co.za)



Concealed Fix ASA Roofing  
PVC Gutter&Downpipe Systems  
Slat Wall Panels  
UV Wall Boards

Manufacture Quality Products with Precision and Build  
the Future with Sincerity

## DecoHigh — Your Trusted Building Materials Partner in South Africa

**Decohigh** Manufacturing was established in 2025 through a strategic joint venture with **Camfly**, a pioneering manufacturer of PVC ('Poly Vinyl Chloride') ceiling and SPC ('Stone Plastic Composite') flooring products in South Africa. Decohigh is located in South Africa and focuses on producing PVC-based innovative decorative materials that are of high-quality, durable and environmentally friendly.

We leverage localised production to deliver faster lead times, highly customisable product offerings and enhanced supply chain reliability. This commitment to local manufacturing directly supports the evolving needs and growth trajectory of South Africa's dynamic construction and home improvement sectors, providing innovative materials designed for local conditions and sustainability goals.

### Why Choose Us?

**Made in South Africa:** Rapid response, shorter lead times, and reduced inventory pressure for you.

**Joint Expertise:** Leveraging Camfly's industry expertise and technology to deliver high-quality and innovative products.

**Quality Commitment:** Strict adherence to international standards with end-to-end quality control from raw materials to finished products.

**Eco-Friendly:** Focused on recyclable, energy-efficient, and sustainable building materials.

At DecoHigh, we believe that a home is the most meaningful space in everyone's life. That's why we approach every panel and every tile with the dedication of true craftsmanship. What we deliver is more than just materials — it is peace of mind, beauty, and a sustainable future.

### We Are A South African Manufacturer

Elevate your living space with our high-quality, stylish and functional products. Our offerings include:

**Slat Wall Panels:** Easy to install, lightweight, durable, moisture proof, and corrosion resistant. Designed to transform any room with a complete makeover. An ideal choice for modern ceiling and wall applications.

**UV Wall Boards :** also known as SPC Wall Panels. Water proof, heat-resistant, easy to clean, moisture resistant, rot proof, anti static, UV resistant, wear resistant, long-lasting color vibrancy. Can be used as a feature wall, bedroom wall, kitchen background wall, bathroom walls and the likes.

**Concealed Fix ASA-PVC Roof Sheet:** Exceptional weather resistance, fire and hail-proof, offering long-term protection for buildings. The high-performance 8mm insulated roofing sheet is engineered specifically for South Africa's diverse climate challenges. The innovative insulated panels combine robust exterior layers with a hollow design, creating the optimal solution for energy-efficient, weatherproof building.

**PVC Gutter and Downpipe Systems:** Designed to perfectly match our roofing sheets, ensuring efficient drainage and aesthetic coherence. The PVC gutter system is corrosion resistant, self coloured as well as UV protected. Manufactured from Poly Vinyl Chloride, the PVC gutter system offers a robust profile. It is designed to accommodate both concealed and exposed brackets, and comes complete with downpipes and an elastomer sealing system. The economical design and user-friendliness make this gutter range perfectly suited for applications across South Africa.



### Concealed-Fix ASA-PVC Roofing System



- Hail Resistance
- Sound Insulation
- Thermal Insulation
- Corrosion Free
- Concealed Fix
- Maintenance Free

The **DecoHigh Concealed Fix Roofing System** is developed through independent product design and structural engineering by **DecoHigh Manufacturing**. Both the external profile and the concealed-fix interlocking structure were carefully engineered to improve roofing performance while delivering a clean and modern architectural appearance.

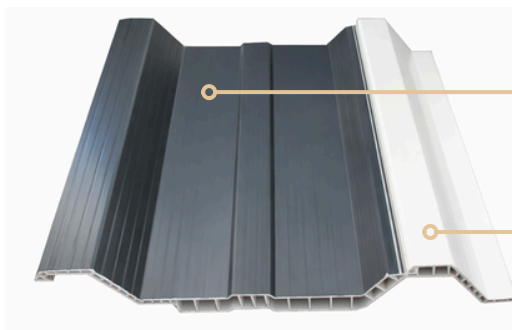
Unlike conventional roofing systems where screws penetrate the roof surface, the ConcealFix interlocking design hides all fasteners beneath the roofing profile, creating a clean architectural finish while significantly reducing the risk of water leakage over time.

Manufactured using co-extruded ASA-PVC technology, the roofing sheets combine excellent weather resistance with long-term structural stability. The ASA co-extruded layer provides outstanding UV protection and color durability, while the reinforced internal structure delivers high strength with significantly lower weight than traditional roofing materials.

**Compared with IBR metal roofing**, DecoHigh ConcealFix eliminates common issues such as corrosion, excessive heat transfer, noise during rain, and visible screw points that often become leakage points over time.

**Compared with concrete roof tiles**, it offers a much lighter roofing system, faster installation, lower structural load on the building, and superior resistance to cracking and water penetration. The interlocking concealed-fix system also enhances the overall load-bearing performance once installed, allowing the roof to function as a continuous structural assembly rather than individual sheets.

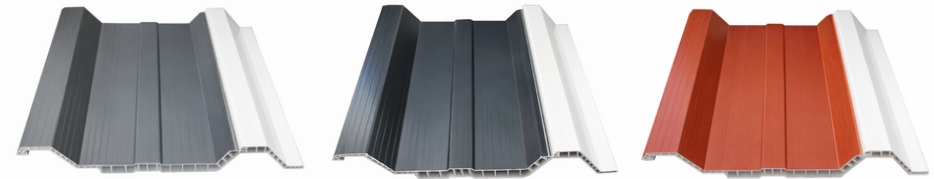
Designed for modern architecture, residential housing, and commercial buildings.



**ASA co-extruded Layer**  
UV Resistant, Colour Stability

**UPVC Rigid Structural Core**  
High-Density PVC Resin, High Strength

### Concealed-Fix ASA-PVC Roofing System



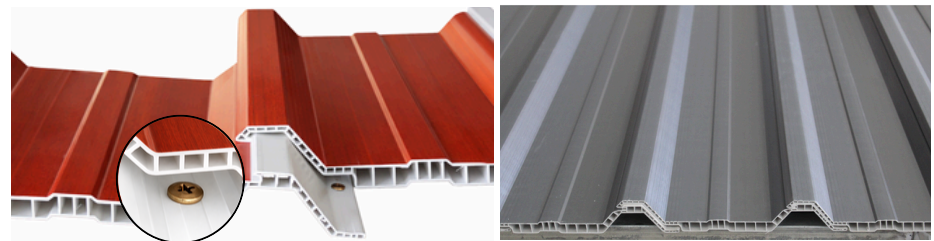
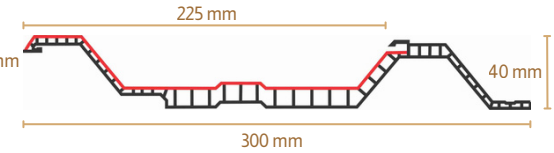
RS303 - Grey

RS305 - Charcoal

RS306 - Brick Red

**Specifications:**

- Sheet Standard Length: 6.6m, 6.0m, 4.6m
- Customized Length Available
- Overall Width: 300mm, Effective Width: 225mm
- Thickness: 10-15mm
- ASA Layer: 0.3mm
- Installed Weight: 7.50 kg per sqm (1.68 kg/m)



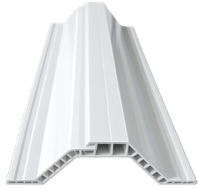
All screws are concealed after installation, creating a clean appearance while reducing the risk of water leakage and screw corrosion.

Feature	Concealed Fix Roofing	IBR Metal Roofing	Concrete Roof Tiles
<b>Water Leakage Risk</b>	● Low Risk	● Medium Risk	● Medium Risk
<b>Corrosion Resistance</b>	● No Corrosion	● High Risk	● No Corrosion
<b>Noise During Rain</b>	● Low Noise	● High Noise	● Low Noise
<b>Heat Insulation</b>	● Excellent	● Poor	● Excellent
<b>Weight</b>	● Medium	● Light	● Heavy
<b>Maintenance</b>	● Low	● Medium	● Medium
<b>Painting Free</b>	● Free	● May Need to Paint	● Free
<b>Hail Resistance</b>	● Excellent	● Excellent	● Medium
<b>Roof Pitch Range</b>	5° – 30°	5° – 30°	17.5° – 45°

## Concealed-Fix ASA-PVC Roofing Fittings

Roof Sheet Starter

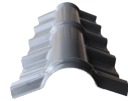
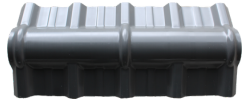
Code: **RST**



The length should be the same as or close to the roof sheet length.

Width: 130mm  
Height: 40mm

Top Ridge  
**TR303-Grey**  
**TR305-Charcoal**  
**TR306- Brick Red**



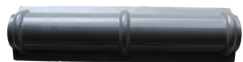
Length: 900mm  
Width: 420mm  
Height: 100mm

Barge Flashing  
**BF303-Grey**  
**BF305-Charcoal**  
**BF306- Brick Red**



Length: 1160mm  
Width: 160mm  
Height: 100mm

Hip Ridge  
**HR303-Grey**  
**HR305-Charcoal**  
**HR306- Brick Red**



Length: 1000mm  
Width: 270mm  
Height: 100mm

Eave Flashing  
**EF303-Grey**  
**EF305-Charcoal**  
**EF306- Brick Red**



Length: 900mm  
Width: 150mm  
Height: 120mm

Three-Way Ridge  
**TW303-Grey**  
**TW305-Charcoal**  
**TW306- Brick Red**



Length: 500mm  
Width: 500mm  
Height: 200mm

Top Ridge End Cape  
**TREC303-Grey**  
**TREC305-Charcoal**  
**TREC306- Brick Red**



Length: 250mm  
Width: 400mm  
Height: 100mm

Hip Ridge End Cape  
**HREC303-Grey**  
**HREC305-Charcoal**  
**HREC306- Brick Red**



Length: 250mm  
Width: 270mm  
Height: 100mm

## Concealed Fix Roofing Sheets Installation Guide

### Installation

#### 1. Product Structure

The roofing system consists of two main components:

Starter Piece (Starter Plate)

Main Roofing Sheet

Once installed, the roof surface will have no exposed screws.

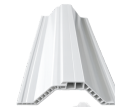
#### 2. Preparation Before Installation

Ensure the spacing of the purlins meets installation requirements (800-1000 mm).

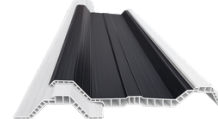
Roofing sheets must be cut to the full roof length in advance.

Note: This product cannot be joined on-site and cannot be end-to-end spliced.

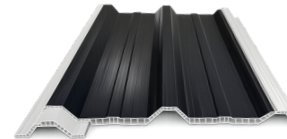
#### 3. Installation Steps



Step 1: Install the Starter Piece  
Fix the starter piece securely onto the purlins.  
This forms the starting point for the hidden-lock system.



Step 2: Install the First Roofing Sheet  
Engage the left hidden-lock profile of the first Sheet onto the starter piece.  
Once locked, the Sheet fully covers the screws on the starter.



Step 3: Fix the Right-Side(White UPVC Rigid Structure) Base of the First Sheet  
Secure the right side of the Sheet onto the fixing base plate using screws.  
These screws will be concealed by the next Sheet.

#### Step 4: Install the Second Roofing Sheet

Lock the second tile onto the right-side fixing base of the first Sheet.

This fully conceals the screws and maintains a seamless, screw-free appearance.

Repeat the process for the full length of the roof.

#### 4. Important Notes

Roofing tiles cannot be joined or overlapped end-to-end.

They must be manufactured or cut according to the full roof length.

Do not attempt mid-panel joints, as this may cause leaks and structural weakness.

Avoid heavy impact or dropping during transport and handling.

During transport and installation, avoid stepping on or applying heavy force to the tiles, to prevent damage to the precision locking system.

Before installation, the tiles are in a “non-load-bearing” condition.

After installation, the tiles form an integrated load-bearing structure with the purlins and adjacent tiles, greatly increasing overall strength and wind resistance—many times stronger than a single loose Sheet.

## UPVC Gutter and Downpipe System

### UPVC Gutter

Code: GUT120

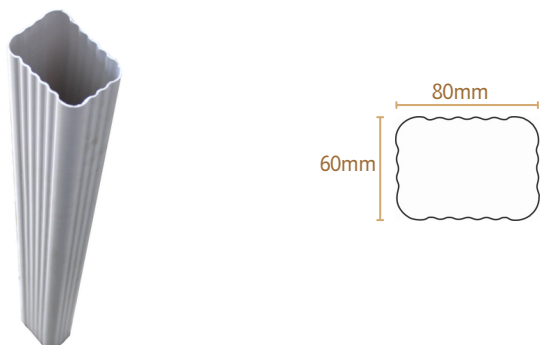
Size: 120mm \* 100mm  
Length: 3.0m and 6.0m



### UPVC Downpipe

Code: DP8060

Size: 80mm \* 60mm  
Length: 3.0m and 6.0m



The **DecoHigh UPVC Gutter and Downpipe System** is designed to provide reliable and long-lasting rainwater management for residential, commercial and industrial buildings.

Manufactured from high-quality rigid UPVC, the system offers excellent structural strength, dimensional stability and resistance to harsh outdoor environments. Unlike traditional metal gutters, UPVC does not rust, corrode or deteriorate over time, ensuring consistent performance with minimal maintenance.

The smooth internal surface of the UPVC gutter allows rainwater to flow efficiently, reducing the risk of blockages and improving overall drainage capacity. At the same time, the lightweight design enables faster installation and reduces structural load on the roof edge.

Engineered for durability and weather resistance, the DecoHigh system maintains its shape and appearance even under long-term exposure to sunlight, rain and temperature variations, making it an ideal solution for modern roofing systems.

#### Key advantages:

- **Corrosion-free performance** – will not rust like metal gutters.
- **High weather resistance** – suitable for harsh outdoor conditions.
- **Lightweight and easy to install** – reduces installation time and labour cost.
- **Smooth inner surface** – efficient water flow and reduced blockage risk.
- **Low maintenance** – long service life with minimal upkeep.
- **Strong and durable structure** – reliable rainwater management for years.

## UPVC Gutter Fittings



UPVC Gutter Jointer

Code: GJ



UPVC Gutter 135 Degree External Corner

Code: GEC135



UPVC Gutter 135 Degree Internal Corner

Code: GIC135



UPVC Gutter Outlet

Code: GOL



UPVC Gutter Bracket

Code: GB



UPVC Gutter External Corner

Code: GEC90



UPVC Gutter Internal Corner

Code: GIC90



UPVC Gutter Ending

Code: GE

## UPVC Downpipe Fittings



UPVC Downpipe Jointer

Code: DJ



UPVC Downpipe 90 Degree Jointer

Code: DJ90



UPVC Downpipe 65 Degree Jointer

Code: DJ65



UPVC Downpipe Junction

Code: DJU



UPVC Downpipe Clips

Code: DC



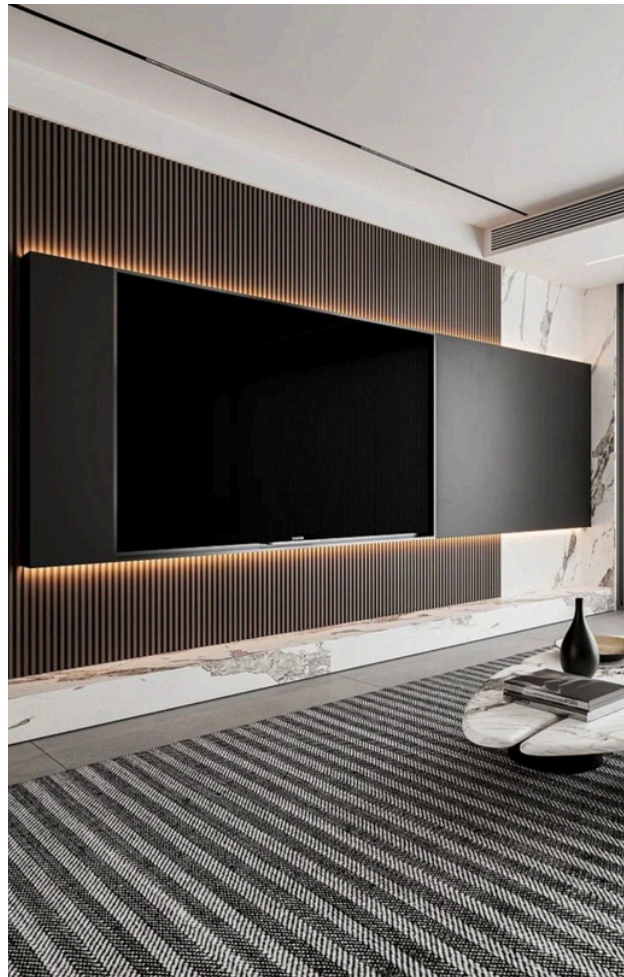
UPVC Downpipe 90 Degree Turn

Code: DT65



UPVC Downpipe 65 Degree Turn

Code: DT65



168G288



168G324



168G191



168G306



168G165



168G195



168G378



168G375



168G052



168G119



168G030



168G193

## WPC Slat Wall Cladding

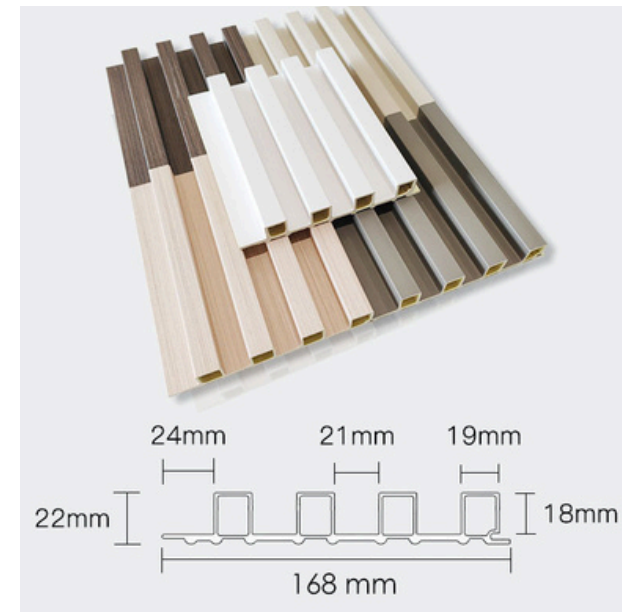
### 168 Series

#### Specifications:

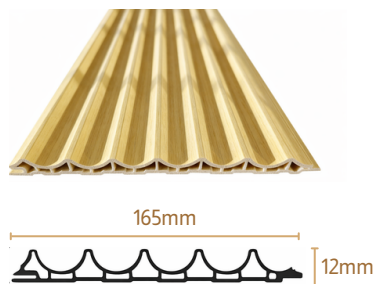
Length: 2900mm

Width: 168mm

Thickness: 23mm



## WPC Slat Wall Cladding - 165 Wave Series



### Specifications:

Length: 2900mm

Width : 165mm

Thickness: 12mm

The 165 Wave Series shares the same color options as the 168 Series.



## PS Slat Wall Cladding - 122 Series



122H5474

122H5043

122H0562

122H3543

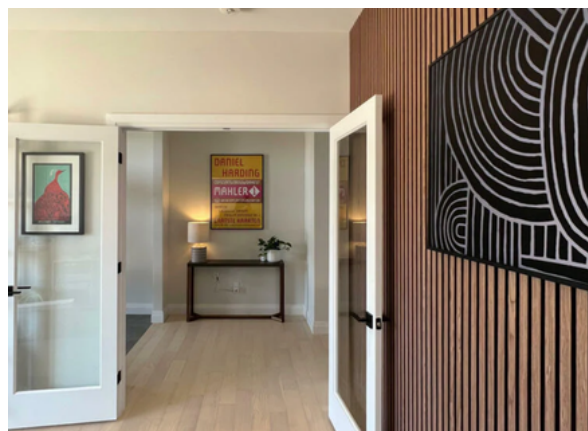
122H2308

### Specifications:

Length: 2700mm

Width : 122mm

Thickness: 12mm



## 168 series Accessories & Installations

### Starting

Code: GD



### Ending

Code: GDx



### Corner

Code: GY

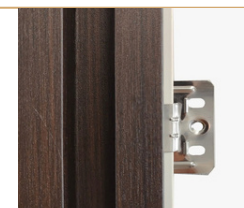


### Clips



Length: 2900mm

All colors are available



### LED Light for 168 Series Slat Wall



LED Profile Code: ALU-20

Length: 3.0m

LED Light Strip Code:

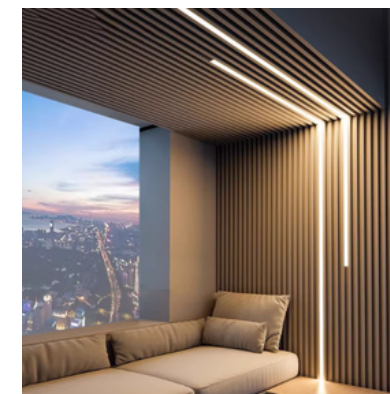
LED-3000K Cool White

LED-4500K Natural White

LED-6000K Warm White

Length: 10m

Drive Code: D-60W



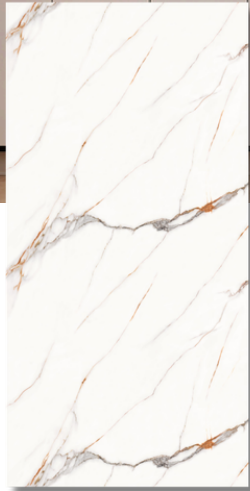
### Installation Methods

#### Adhesive Method:

- Apply a good quality construction adhesive in a zig-zag pattern or in lines on the back of the panel, ensuring good coverage.
- Apply a continuous line of adhesive around the perimeter of the panel, about 50mm from the edge.
- Carefully place the panel into position on the wall.

#### Screw & Plug Method (for solid walls):

- Use a drill with a hammer action and a masonry bit to drill pilot holes into the wall through the pre-drilled holes in the panel.
- Insert plastic plugs into the holes until they are flush with the wall surface.
- Use a cordless screwdriver to drive screws through the panel into the plugs to secure it to the wall.



UV0757



UV0490

**Water Proof**

**Easy Install**

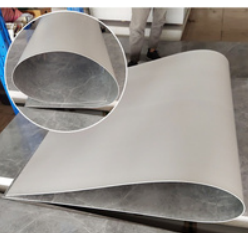
**High Strength**

**Fire Retardant**



**Specifications:**

Length: 2700mm  
Width: 1220mm  
Thickness: 3mm

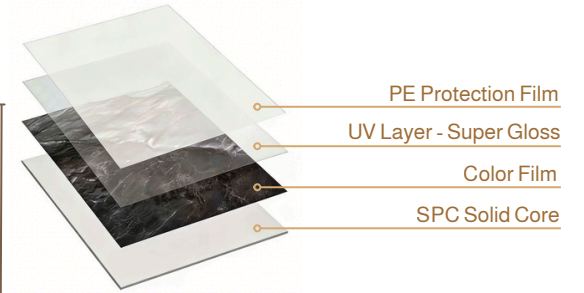


**UV Board**



1220mm

2700mm



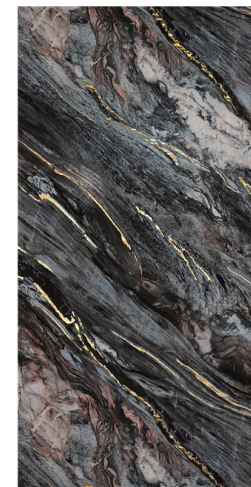
**Specifications:**

Length: 2700mm Width: 1220mm Thickness: 3mm

**UV Board** is an SPC-based composite material enhanced with a specially applied UV-cured coating. This advanced surface treatment delivers a durable, high-gloss, and environmentally friendly finish. The UV coating provides excellent resistance to scratches, chemicals, and moisture, ensuring long-lasting performance. With its vibrant appearance and superior durability, UV board is an ideal choice for interior decoration, wall cladding, cabinetry, and modern furniture applications.



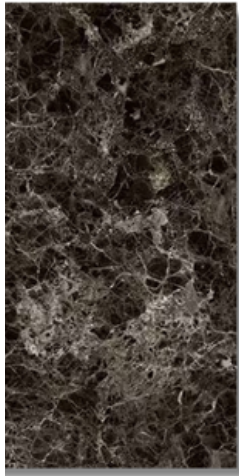
UV0491



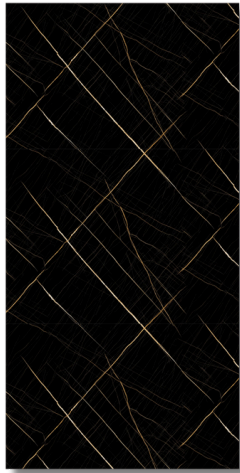
UV0874



UV0611



UV157E



UV0506



UV0526



UV0496

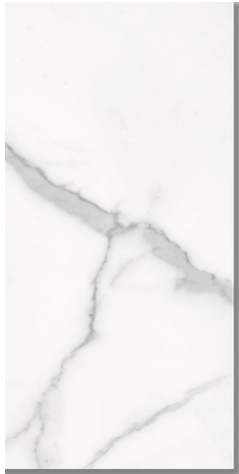
**Specification:**

Length: 2700mm  
Width: 1220mm  
Thickness: 3mm

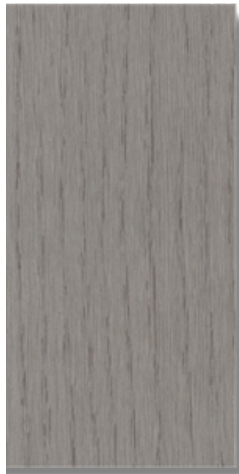


UVF82066  
Matt Finish





UV82043 Matt Finish



FY8117 Matt Finish



UVF71826 Matt Finish

**Specifications:**

Length: 2700mm  
Width : 1220mm  
Thickness: 3mm



**UV Board Installation Methods**

**1. Surface Preparation (Substrate Prep)**

Ensure the wall surface is perfectly flat, dry, and free of dust and grease.

**2. Applying Adhesive & Fixing (Critical Step)**

- Use a neutral-grade construction adhesive or high-strength grab adhesive.
- Apply the adhesive in a uniform 'S' pattern or in vertical beads on the back of the panel.
- Maintain a spacing of approximately 10-20 cm between adhesive beads. Avoid applying adhesive only to the edges to prevent the centre from bowing.
- Press the panel firmly against the wall. Lightly tap across the surface with a rubber mallet to ensure full contact and a strong bond.

**3. Panelling & Sealing Joints**

- Leave an expansion gap of 1-2 mm between panels to allow for natural expansion and contraction, especially important for larger wall areas.
- Use UV board Accessories to seal the joints for a neat and professional finish.

**Accessories**



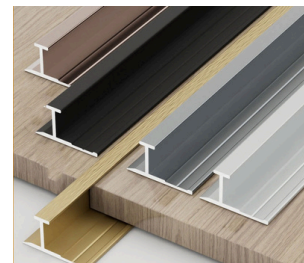
Internal Corner

Code:  
IC-WH (White)  
IC-BK (Black)  
IC-SL (Sliver)  
IC-GD (Gold)



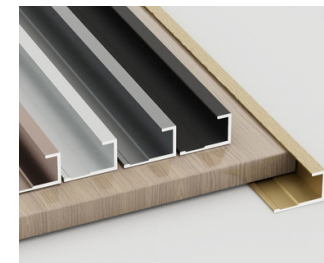
External Corner

Code:  
EC-WH (White)  
EC-BK (Black)  
EC-SL (Sliver)  
EC-GD (Gold)



Jointer

Code:  
TJ-WH (White)  
TJ-BK (Black)  
TJ-SL (Sliver)  
TJ-GD (Gold)



Ending

Code:  
ED-WH (White)  
ED-BK (Black)  
ED-SL (Sliver)  
ED-GD (Gold)

